



REGIONAL SPECIALISED METEOROLOGICAL CENTRE-TROPICAL CYCLONES, NEW DELHI
TROPICAL WEATHER OUTLOOK

DEMS-RSMC TROPICAL CYCLONES NEW DELHI DATED 18.09.2021

TROPICAL WEATHER OUTLOOK FOR NORTH INDIAN OCEAN (THEBAY OF BENGAL OF BENGAL OF BENGAL AND ARABIAN SEA) VALID FOR NEXT 120 HOURS ISSUED AT 0600 UTC OF 18.09.2021 BASED ON 0300 UTC OF 18.09.2021.

BAY OF BENGAL:

YESTERDAY'S, WELL MARKED LOW PRESSURE AREA OVER NORTHWEST MADHYA PRADESH & ADJOINING SOUTHWEST UTTAR PRADESH WEAKENED INTO A LOW PRESSURE AREA AT 0000 UTC OF TODAY, THE 18TH SEPTEMBER, 2021. AT 0300 UTC OF TODAY, 18TH SEPTEMBER 2021, THE LOW PRESSURE AREA LAY OVER NORTHWEST MADHYA PRADESH & ADJOINING EAST RAJASTHAN. IT IS LIKELY TO BECOME LESS MARKED DURING NEXT 24 HOURS.

CONVECTION ASSOCIATED WITH LOW PRESSURE AREA OVER NORTHWEST MADHYA PRADESH ADJOINING EAST RAJASTHAN AND NEIGHBOURHOOD. ASSOCIATED SCATTERED LOW AND MEDIUM CLOUDS WITH EMBEDDED MODERATE TO INTENSE CONVECTION OVER NORTHWEST MADHYA PRADESH, SOUTHEAST RAJASTHAN & NEIGHBOURHOOD.

SCATTERED LOW AND MEDIUM CLOUDS WITH EMBEDDED INTENSE TO VERY INTENSE CONVECTION OVER NORTH BAY OF BENGAL AND SOUTHWEST BAY OF BENGAL. SCATTERED LOW AND MEDIUM CLOUDS WITH EMBEDDED MODERATE TO INTENSE CONVECTION OVER REST OF BAY OF BENGAL. SCATTERED LOW AND MEDIUM CLOUDS WITH EMBEDDED ISOLATED WEAK TO MODERATE CONVECTION OVER NORTH ANDAMAN SEA.

PROBABILITY OF CYCLOGENESIS (FORMATION OF DEPRESSION) DURING NEXT 120 HRS:

24 HOURS	24-48 HOURS	48-72 HOURS	72-96 HOURS	96-120 HOURS
NIL	NIL	NIL	NIL	NIL

ARABIAN SEA:

SCATTERED LOW AND MEDIUM CLOUDS WITH EMBEDDED MODERATE TO INTENSE CONVECTION OVER NORTHWEST PARTS OF EASTCENTRAL ARABIAN SEA AND SOUTH ARABIAN SEA NEAR SOUTH OF LATITUDE 10.0°N. SCATTERED LOW AND MEDIUM CLOUDS WITH EMBEDDED WEAK TO MODERATE CONVECTION OVER SOUTHEAST ARABIAN SEA OFF KERALA COAST AND COMORIN REGION.

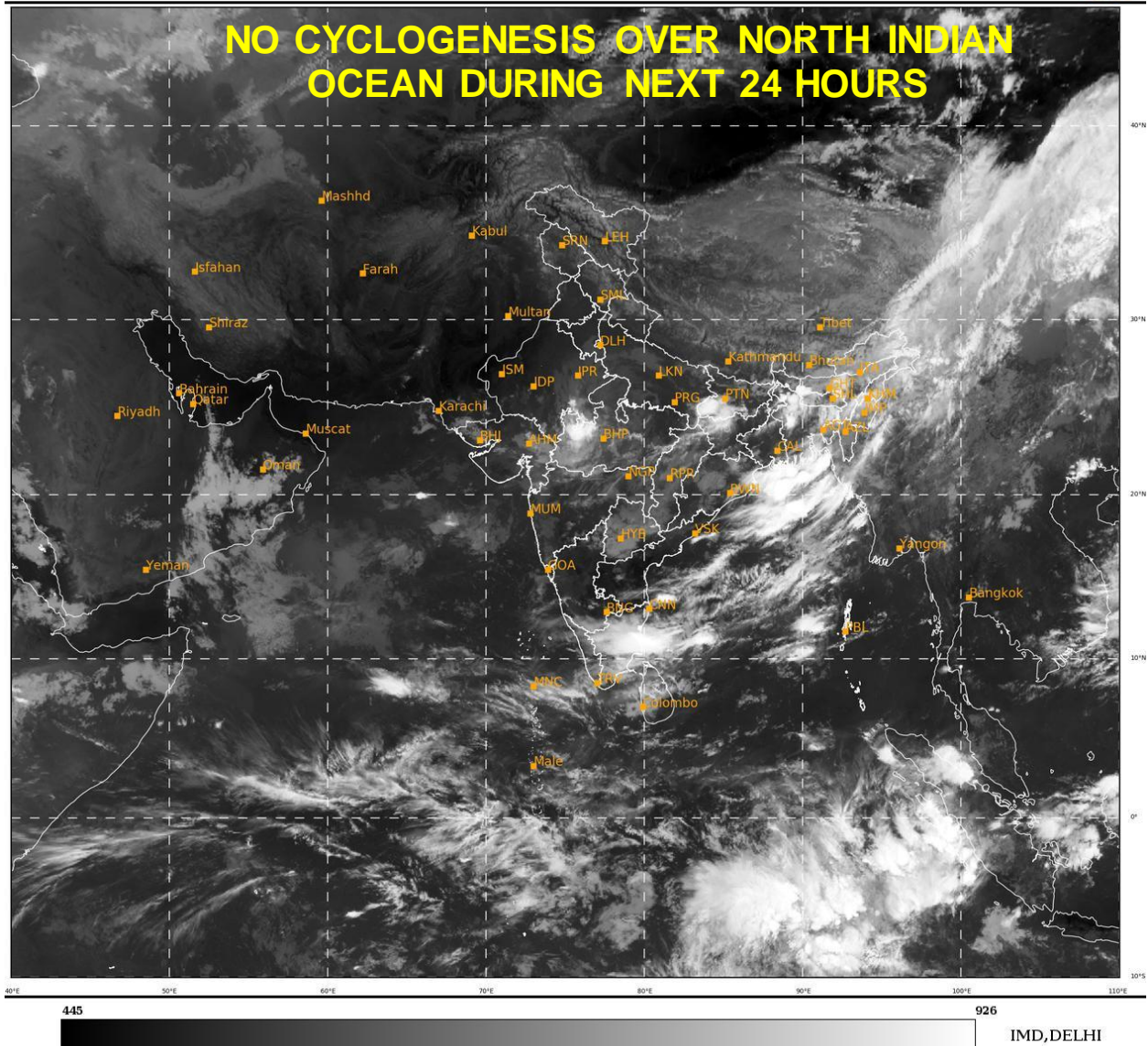
PROBABILITY OF CYCLOGENESIS (FORMATION OF DEPRESSION) DURING NEXT 120 HRS:

24 HOURS	24-48 HOURS	48-72 HOURS	72-96 HOURS	96-120 HOURS
NIL	NIL	NIL	NIL	NIL

REMARKS: NIL

SAT : INSAT-3D IMG
IMG_TIR1 10.8 um
L1C Mercator

18-09-2021/(0300 to 0326) GMT
18-09-2021/(0830 to 0856) IST



PROBABILITY OF CYCLOGENESIS (FORMATION OF DEPRESSION):NIL: 0%, LOW: 1-25%, FAIR: 26-50%, MODERATE: 51-75% AND HIGH: 76-100%
This is a guidance Bulletin for the WMO/ESCAP Panel Member countries,. Please visit respective National websites for Country specific Bulletins